

VEHICLE INSPECTION REPORT

WG63OJY

Land Rover Defender 110 2.2 TDCI

Inspection

Serious Damage? No

Vehicle

VAT

V5 Buyer To Apply

Details

Reg. date	01/01/2014	VIN	SALLDHNP7DA445837	CAP Below	£5,825.00
Year	2014	Body Style	4x4	Gearbox	MANUAL
Mileage	82,136 Miles Warranted	MOT Due	31/12/2025	Gears	6
Fuel Type	Diesel	CAP Clean	£10,350.00	Axle Combi	4x4
Colour	WHITE	CAP Average	£8,350.00		

BONNET RELEASE INOP TOW BAR, ROOF RACK, POWER INVERTER

Tyres

NSF

NSR

OSF

OSR

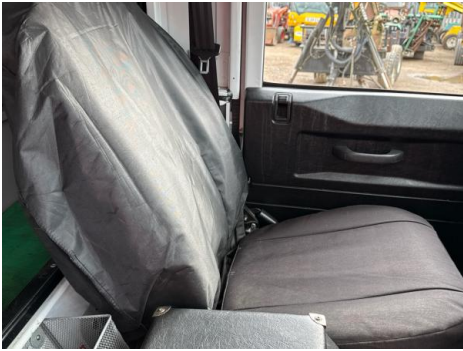
Spare

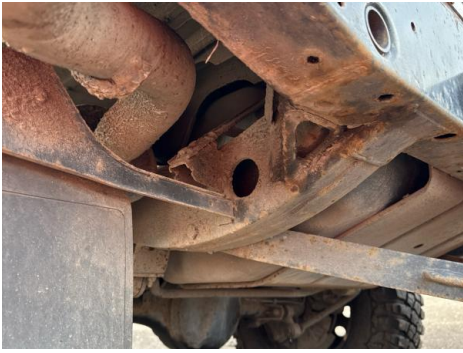
Features

- Bluetooth connection
- Front electric windows
- Park assist camera
- Central locking
- Digital radio
- Cloth seat trim
- Radio/CD

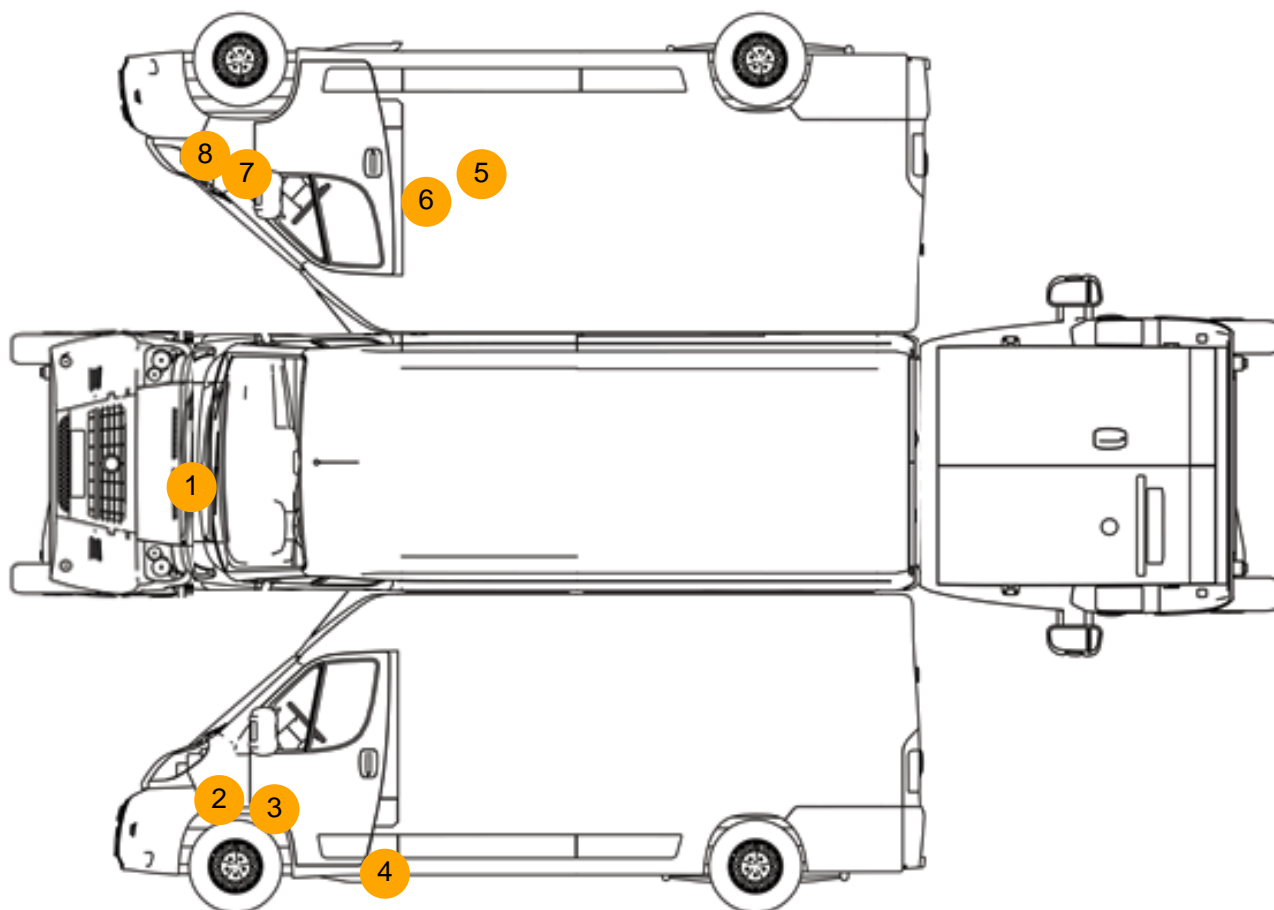
Photos







Condition Check



Damage Photos



1: Bonnet
Chipped
Multiple Chips



2: Wing nsf
Dented
With Paint Damage



3: Wing nsf
Dented
Over 30mm



4: Sill ns
Dented
Over 30mm



5: Qtr Panel osr
Dented
Over 30mm



6: A Post os
Dented
Over 30mm



7: Wing osf
Dented
Over 30mm



8: Wing osf
Dented
With Paint Damage

Interior

Carpet Condition	OK	Upholstery Condition	OK
Seat Condition	OK	Odour	No
Engine Runs	OK	No Excessive Smoking	OK
EML light illuminated	OK	DPF light illuminated	OK
ABS light illuminated	OK		